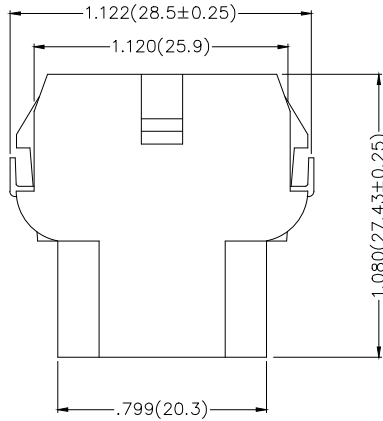
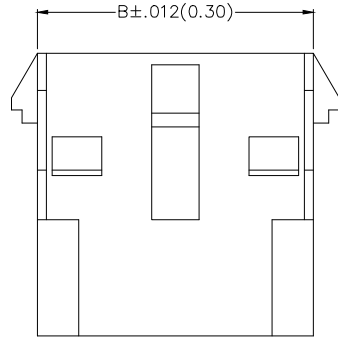


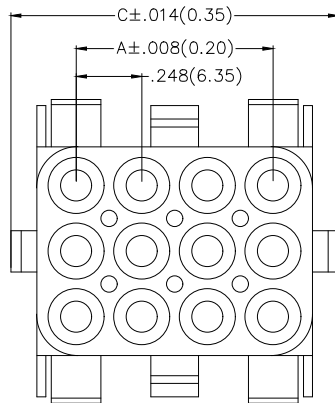
1 2 3 4 5 6 7 8

REV	LOCATIONS	DESCRIPTION	DATE	REVISER	APPD

Electrical
 Temperature Range—Operating: -25°C~+85°C
 Material
 Housing: PA66 (UL 94V-2)
 Applicable Terminal: FT63501
 Mates With: FHG63503Series.



Circuits (n)	Part No.	Dimensions(in/mm)		
		A	B	C
9	FHG63506-T09F2TB	.500(12.70)	.799(20.30)	.996(25.30)
12	FHG63506-T12F2TB	.744(19.05)	1.051(26.70)	1.248(31.70)
15	FHG63506-T15F2TB	1.000(25.40)	1.301(33.05)	1.498(38.05)



Ordering Information

FHG 635 06 — T XX F 2 T B
 1 2 3 4 5 6 7 8 9

1	Category FHG—Housing	2	Series Number 635—Pitch6.35mm	3	Distinction No. 06	4	Row Option T—Three row	5	Circuits XX
6	Entry Type F—Female	7	Material—Resin 2—PA66	8	Color—Resin T—Transparent	9	Packaging B—PE Bag		

<p>THIRD ANGLE PROJECTION</p>	GENERAL TOLERANCES (UNLESS SPECIFIED)		APPROVE BY FRANK	DATE 18/JUN/13	PART NO. FHG63506-TXXF2TB	ITEM NO. FHG63506	<p>Leader Of Industry</p>	
	X.±.012(0.30)	X.±5'	CHECKED BY JACOB	DATE 18/JUN/13	TITLE Wire to Board Pitch 6.35mm(Housing)			REV 0
	DESIGN UNITS Inch (metric)	X.X±.008(0.20)	.X'±2'	DRAWN BY CHERRY	DATE 18/JUN/13	THIS DRAWING CONTAINS INFORMATION THAT IS PROPRIETARY TO TXGA INDUSTRIAL ELECTRONICS(S.Z)CO.,LTD AND SHOULD NOT BE USED WITHOUT WRITTEN PERMISSION		
	SCALE 5:1	SIZE A4	X.XX±.006(0.15)	.XX'±1'				
		X.XXX±.004(0.10)	.XXX'±0.5'					

1 2 3 4 5 6 7 8